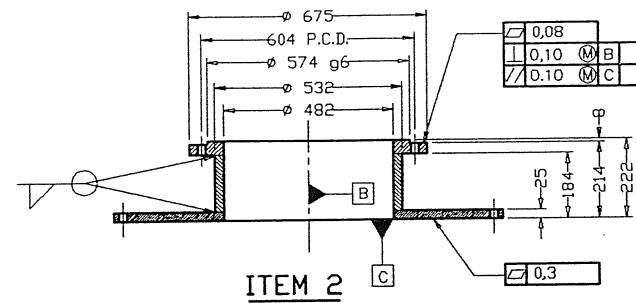
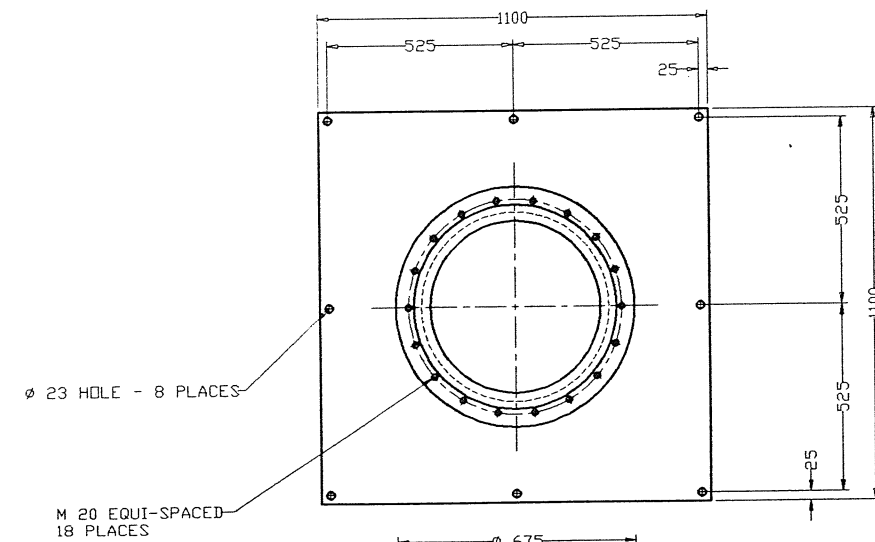
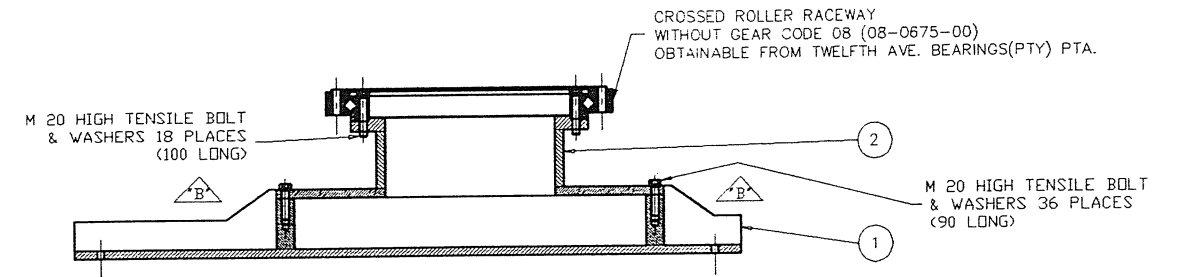
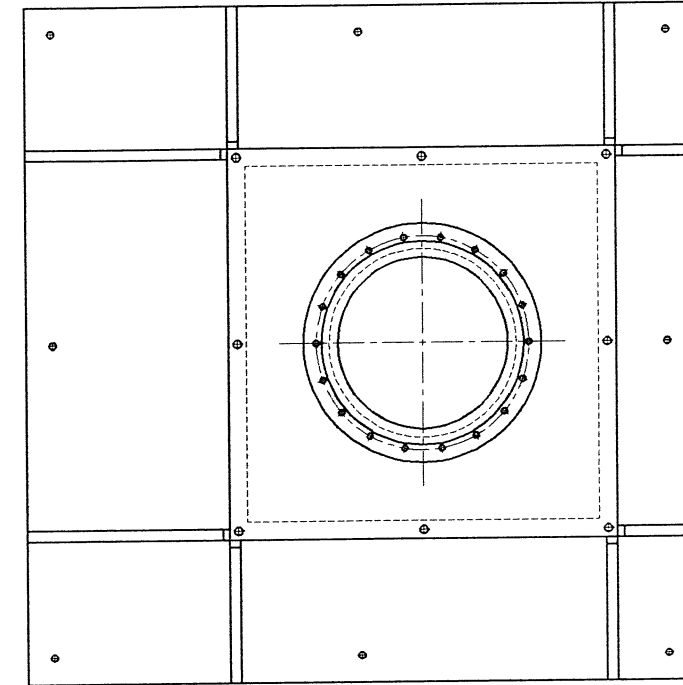


ITEM 1



ITEM 2



DRAWING STATUS	ACTIVE	SIGN	DATE
FOR 3rd. PARTY APPROVAL			
PERMIT MATERIAL ORDER			
FOR MANUFACTURE			
AS BUILT			
SUPERSEDED			

NOTES: (UNLESS OTHERWISE STATED)										MATERIAL:		GENERAL TOLERANCES:	
1) REMOVE ALL BURRS & SHARP EDGES TO 0.5x45° MAX.	2) SCREW THREADS TO ISO 281	3) SURFACE TEXTURE: (Ra TO ISO 1302)	4) ALL INTERNAL RADII 0.3 MAX.	5) PRIME AND PAINT PLASCON CLATEX 8 ULTRA DURABLE HIGH GLOSS POLYURETHANE ENAMEL PL 17						MILD STEEL		X	±0.5
												X,X	±0.2
												X,XX	±0.05
												ANGLES	±1°
TITLE : TURNTABLE										ISSUE		SHT 1 OF 1	
DRG NO : VTFO-60035-02										SCALE : 1:10		WHEN PLOTTED ON UNLESS OTHERWISE STATED	
A1													